



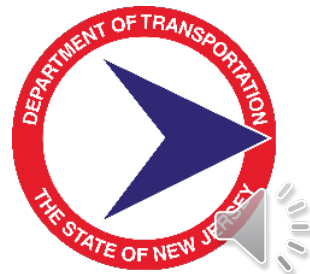
Route 15 Southbound, Bridge over Rockaway River Township of Jefferson, Morris County

Virtual Public Information Center

February 16 - March 2, 2021



Engineering | Design | Planning | Construction Management



Presentation Agenda

- Project Overview
- Key Project Features
- Project Schedule
- Public Feedback



Project Overview

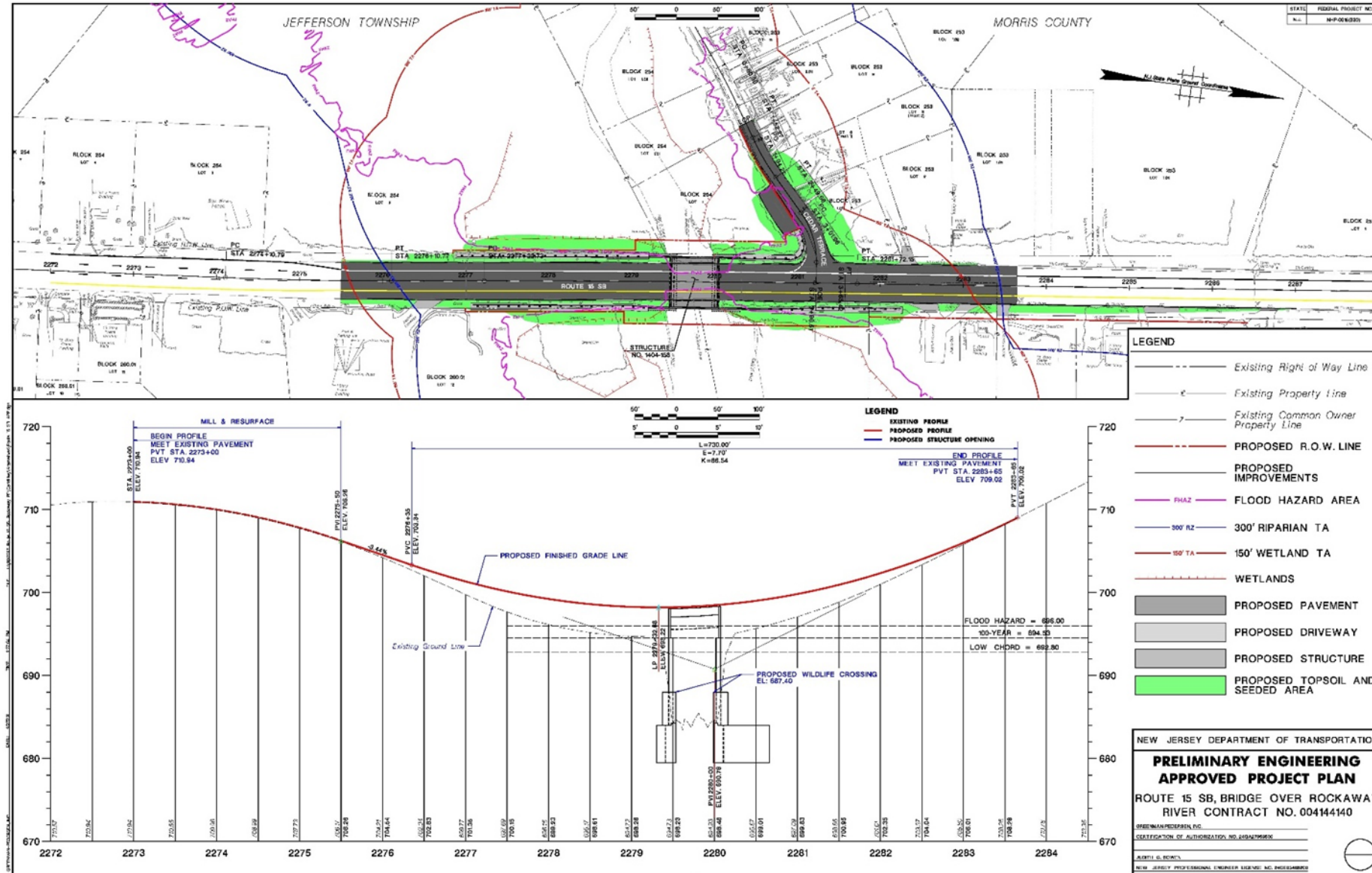


Key Project Features – Project Need

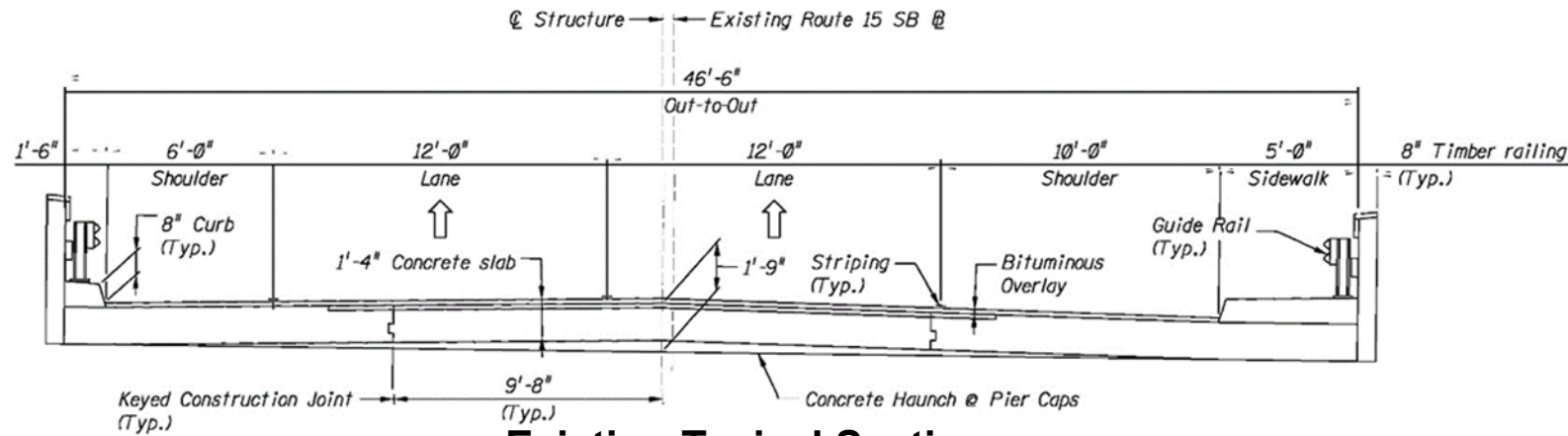
- Structure No. 1404-158 – Built in 1900
- Bridge was widened in 1947



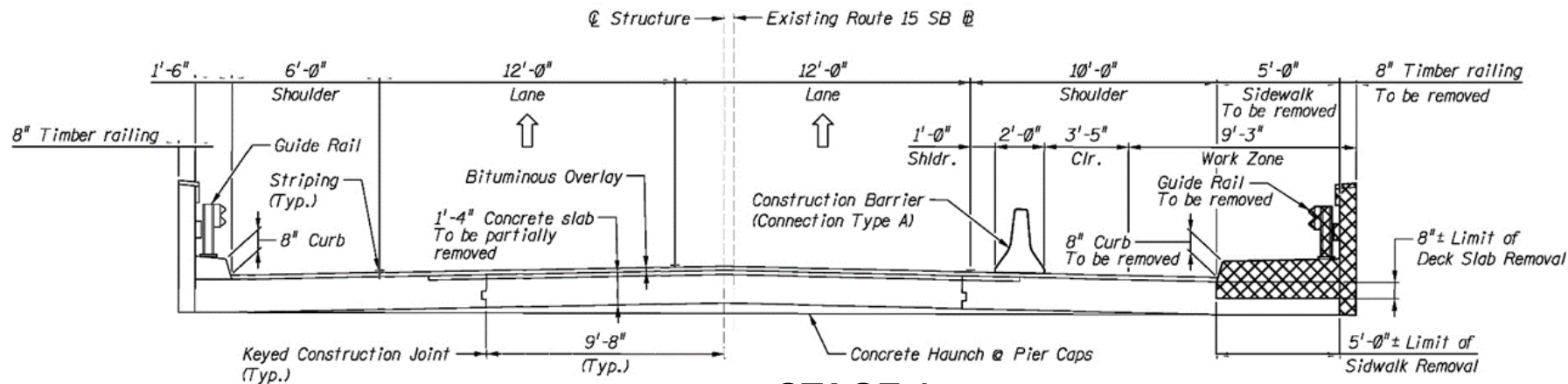
Key Project Features – Bridge Replacement



Key Project Features – Staging Sections



Existing Typical Section
(looking south)



STAGE 1
(Remove existing sidewalk – temporary structural repairs)

Key Project Features – Stage 1

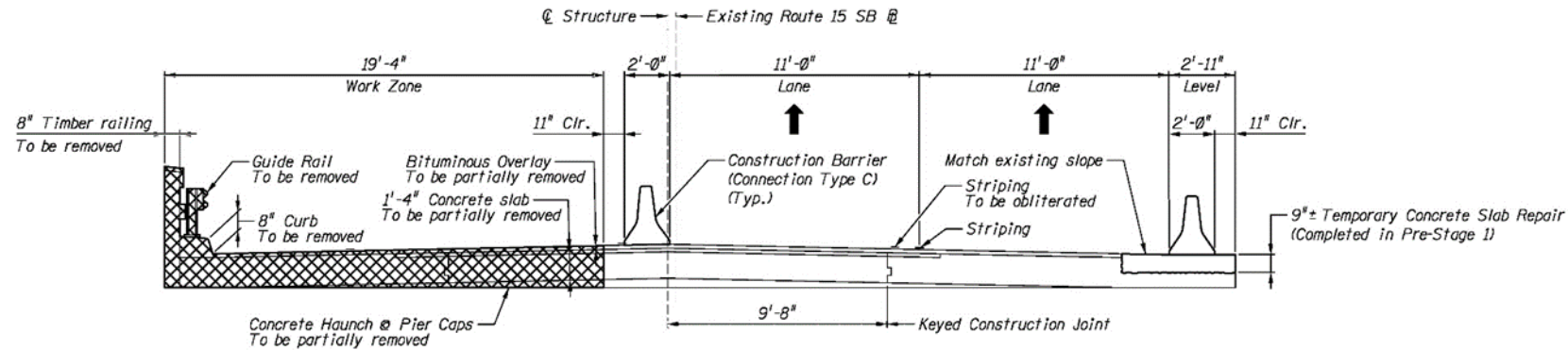


STAGE 1

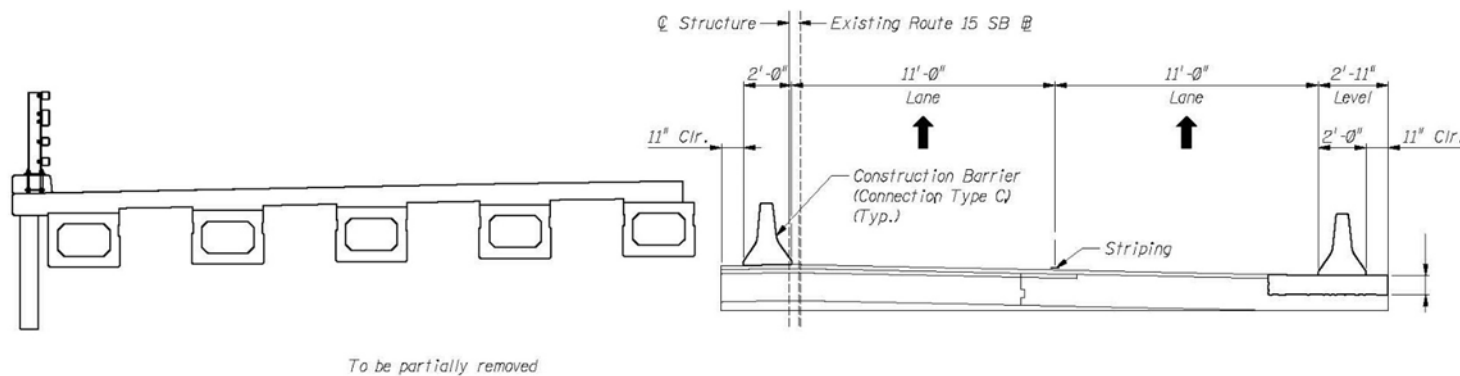
(Remove existing sidewalk – temporary structural repairs



Key Project Features – Staging Sections



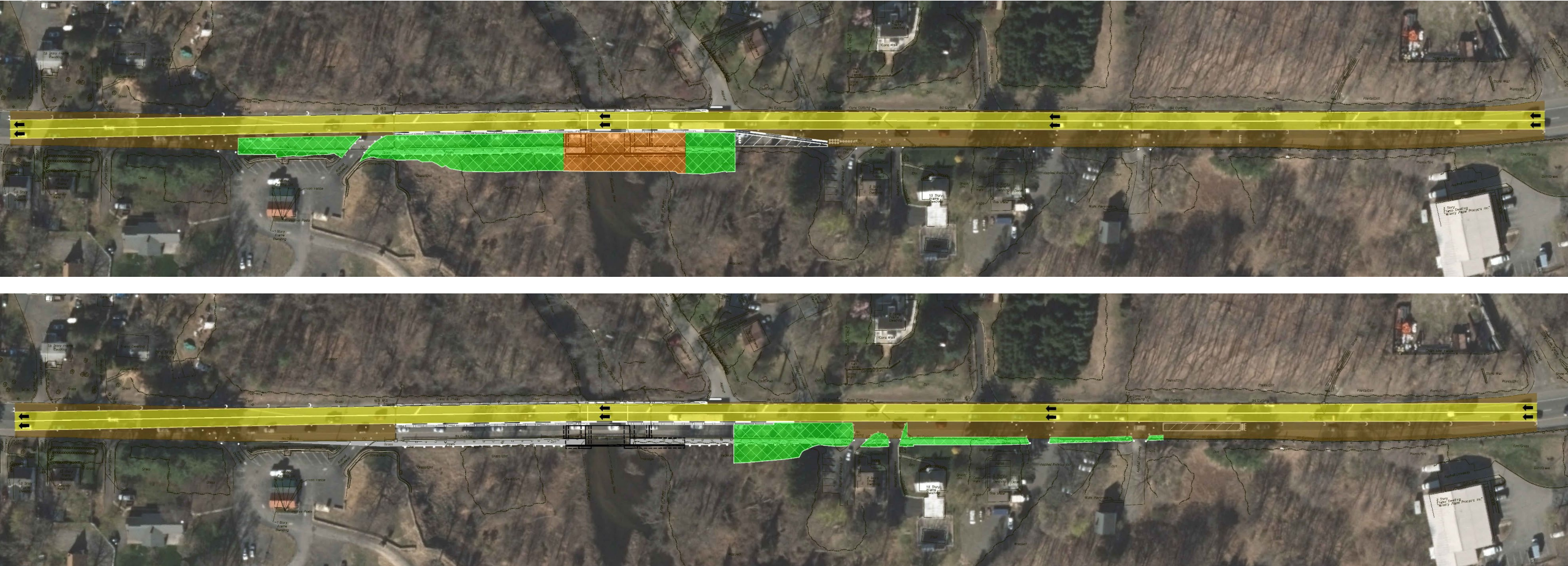
STAGE 2 Demolition



STAGE 2 Construction



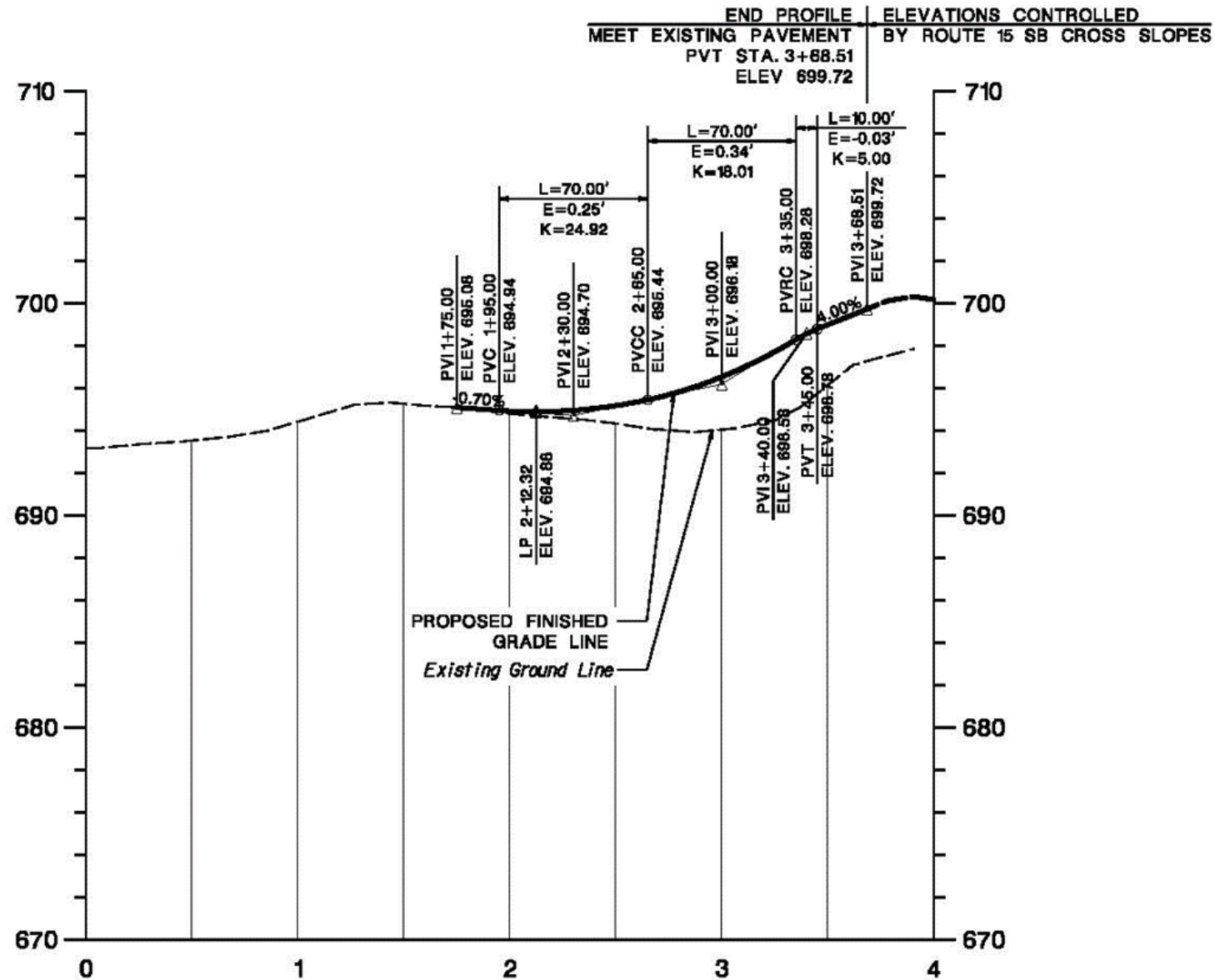
Key Project Features – Stage 2



STAGE 2



Cedar Terrace Profile



Key Project Features – Cedar Terrace



Construct Diversionary Road



Alternate in-bound Traffic to Raise Cedar Terrace



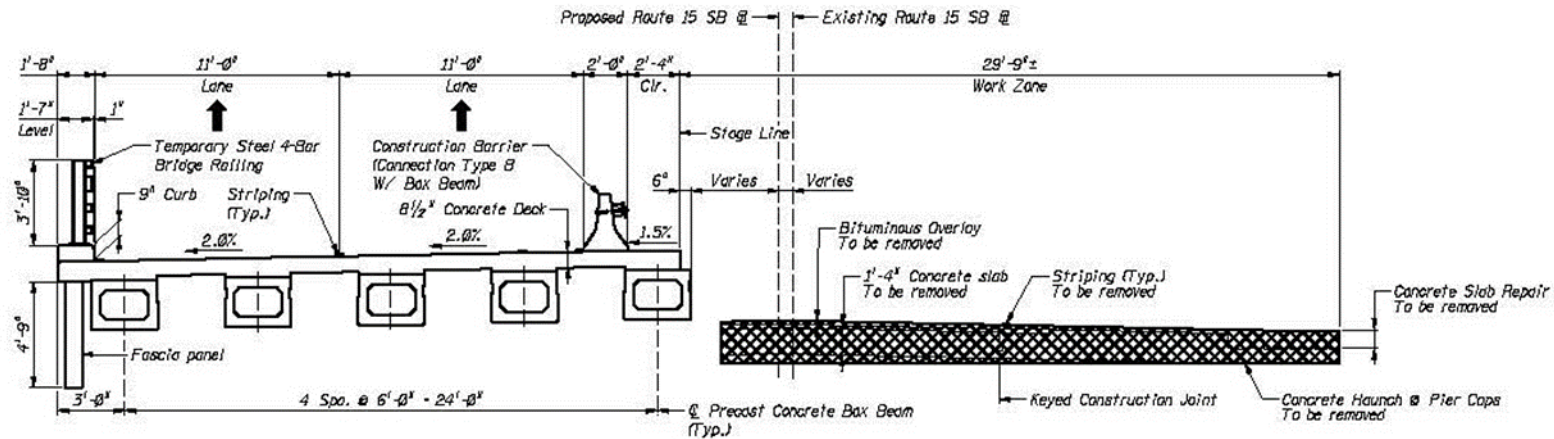
Key Project Features – Cedar Terrace



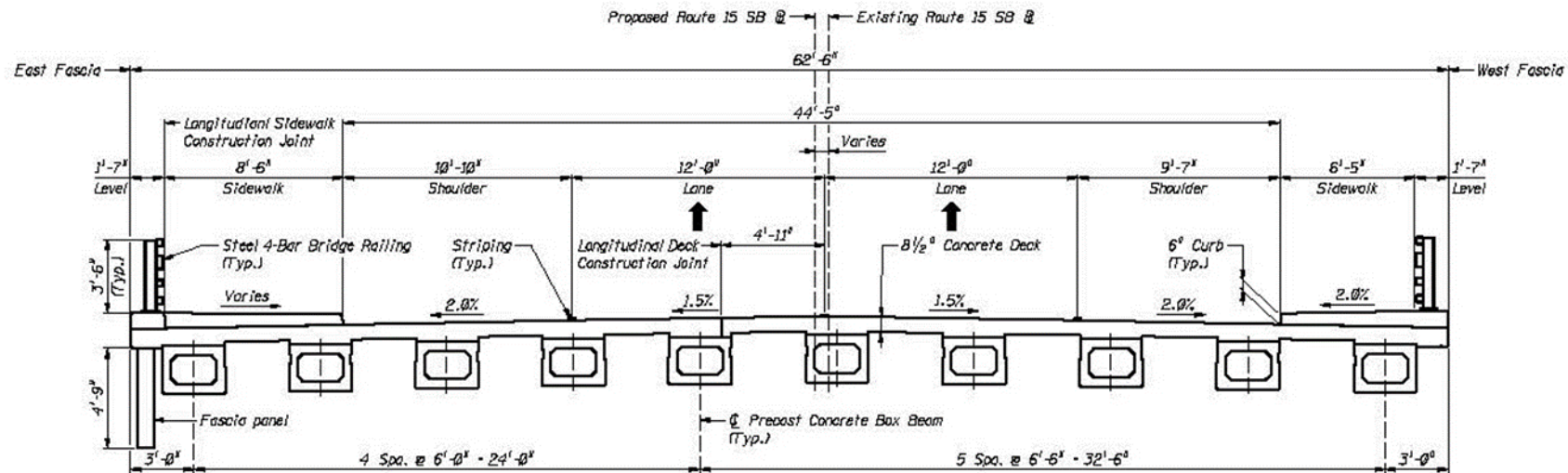
Remove Diversionary Road, Replace Stone Parking, Grade to Meet Higher Road Elevations



Key Project Features – Stage 3 & 4 Sections



STAGE 3 Demolition



STAGE 4 – FINAL CONFIGURATION



Key Project Features – Stages 3 & 4



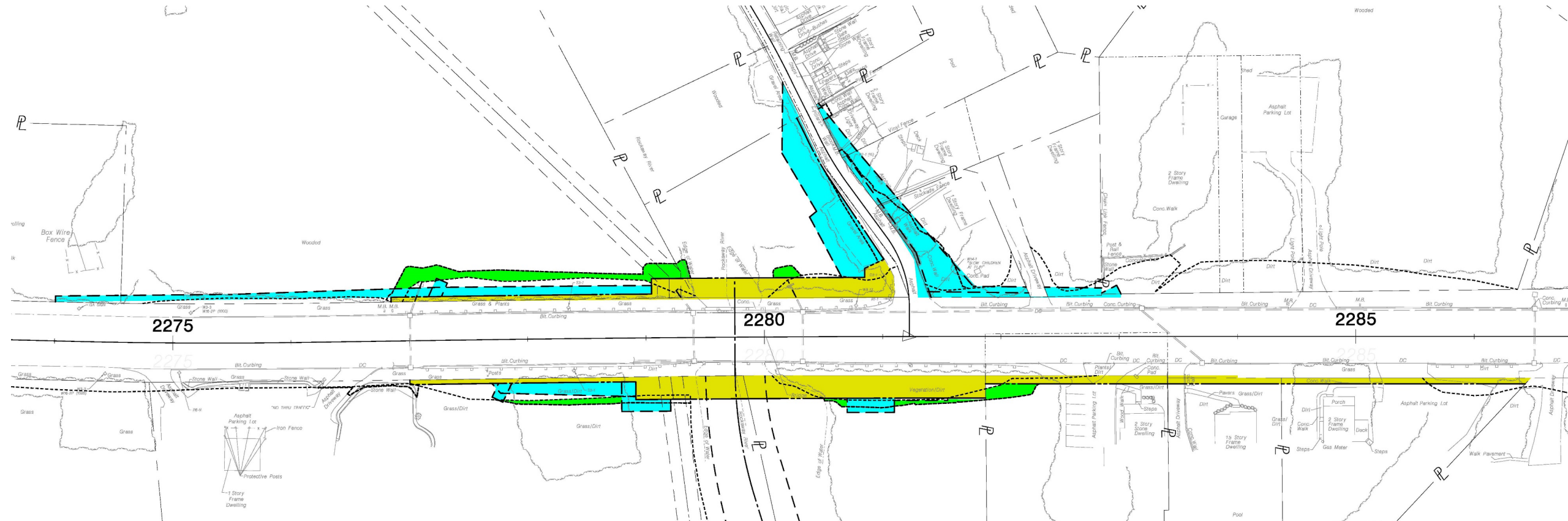
Stage 3



Stage 4



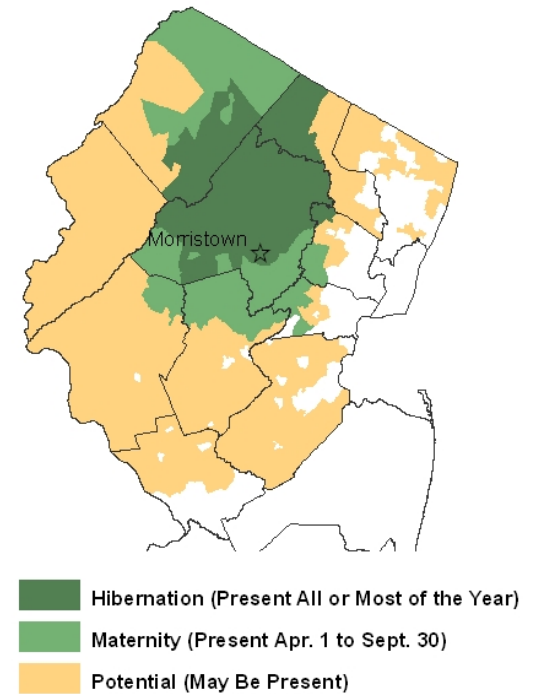
Key Project Features – Right of Way Impacts



Key Project Features – Environmental Permits

NJDEP Permitting

- Flood Hazard Area Individual Permit
- Freshwater Wetlands Individual Permit (Wetlands and Open Water)



Project Schedule



Complete Design - Fall 2021



Start Construction - Summer 2022



Complete Construction - Fall 2025



Public Feedback

**Submit Questions, Comments and Suggestions
at the link below:**

For more information contact:

Anthony Sytko, Regional Coordinator
New Jersey Department of Transportation
Office of Community Relations
PO Box 600
Trenton, NJ 08618
Phone: 609.963.1992
Email: Anthony.Sytko@dot.nj.gov

You may also provide your comments at the following link:
www.Route15SBPIC.com

